



**India Meteorological Department
(Ministry of Earth Sciences)**

BULLETIN NO. 1 (BoB/02/2023)

TIME OF ISSUE: 2145 HOURS IST **DATED: 09.05.2023**
FROM: INDIA METEOROLOGICAL DEPARTMENT (FAX NO. 24643965/24699216/24623220)

TO: CONTROL ROOM, NDM, MINISTRY OF HOME AFFAIRS (FAX.NO. 23093750)
CONTROL ROOM NDMA (FAX.NO. 26701729)
CABINET SECRETARIAT (FAX.NO.23012284, 23018638)
PS TO HON'BLE MINISTER FOR S & T AND EARTH SCIENCES (FAX NO.23316745)
SECRETARY, MOES (FAX NO. 24629777)
H.Q. (INTEGRATED DEFENCE STAFF AND CDS) (FAX NO. 23005137/23005147)
DIRECTOR GENERAL, DOORDARSHAN (23385843)
DIRECTOR GENERAL, AIR (23421105, 23421219)
PIB MOES (FAX NO. 23389042)
UNI (FAX NO. 23355841)
D.G. NATIONAL DISASTER RESPONSE FORCE (NDRF) (FAX NO. 26105912, 2436 3260)
DIRECTOR, PUNCTUALITY, INDIAN RAILWAYS (FAX NO. 23388503)
CHIEF SECRETARY, ANDAMAN & NICOBAR ISLANDS (FAX NO. 03192- 232656)
CHIEF SECRETARY, GOVT. WEST BENGAL (FAX NO. 033-22144328)
CHIEF SECRETARY, GOVT. OF ODISHA (FAX NO. 0674 -2536660)
CHIEF SECRETARY, GOVT. OF ANDHRA PRADESH (FAX NO. 0863-2441029, 08645-246600)
CHIEF SECRETARY, GOVT. OF TAMIL NADU (FAX NO. 044-25672304)
CHIEF SECRETARY, GOVT. OF PUDUCHERRY (FAX NO. 0413-2337575, 2334145)

Sub: Depression over southeast Bay of Bengal

The well marked low pressure area over Southeast Bay of Bengal and adjoining South Andaman Sea concentrated into a depression and lay centered at 1730 hours IST of today, the 9th May 2023 over southeast Bay of Bengal near latitude 8.3°N and longitude 89.5°E, about 510 km southwest of Port Blair, 1480 km south-southwest of Cox's Bazar (Bangladesh) and 1360 km south-southwest of Sittwe (Myanmar).

It is very likely to move north-northwestwards and intensify gradually into a cyclonic storm over the same region around 10th May evening. Continuing to move north-northwestwards, it will gradually intensify further into a severe cyclonic storm by 11th May morning and very severe cyclonic storm around same evening over southeast and adjoining central Bay of Bengal. Thereafter, it is likely to recurve gradually, move north-northeastwards and cross southeast Bangladesh and north Myanmar coasts between Cox's Bazar (Bangladesh) and Kyaukpyu (Myanmar) around forenoon of 14th May, 2023.

Forecast track and intensity are given below:

Date/Time (IST)	Position (Lat. °N/ long. °E)	Maximum sustained surface wind speed (Kmph)	Category of cyclonic disturbance
09.05.23/1730	8.3/89.5	45-55 gusting to 65	Depression
10.05.23/0530	9.3/88.5	50-60 gusting to 70	Deep Depression
10.05.23/1730	10.3/88.1	80-90 gusting to 100	Cyclonic Storm
11.05.23/0530	11.4/87.4	90-100 gusting to 110	Severe Cyclonic Storm
11.05.23/1730	12.7/87.3	110-120 gusting to 130	Very Severe Cyclonic Storm
12.05.23/0530	13.5/87.4	130-140 gusting to 155	Very Severe Cyclonic Storm
12.05.23/1730	14.6/88.0	140-150 gusting to 165	Very Severe Cyclonic Storm
13.05.23/0530	16.0/89.2	135-145 gusting to 160	Very Severe Cyclonic Storm
13.05.23/1730	17.6/90.6	130-140 gusting to 155	Very Severe Cyclonic Storm
14.05.23/0530	19.7/92.0	110-120 gusting to 130	Very Severe Cyclonic Storm
14.05.23/1730	21.8/93.2	65-75 gusting to 85	Cyclonic Storm

Warnings:

(i) Rainfall (warning graphics enclosed)

- ❖ **Andaman & Nicobar Islands:** Rainfall at most places with Heavy to very heavy rainfall at isolated places is likely during 9th to 11th May. Heavy rainfall at isolated places over Andaman Islands is likely on 12th May.
- ❖ **Tripura & Mizoram:** Rainfall at many places with Heavy rainfall at isolated places is likely on 13th May and heavy to very heavy rainfall at isolated places on 14th May.
- ❖ **Nagaland, Manipur & south Assam:** Rainfall at many places with Heavy rainfall at isolated places is on 14th May.

(ii) Wind warning:

- ❖ **Andaman & Nicobar Islands:**
Squally wind speed reaching 45-55 kmph gusting to 65 kmph prevails on 9th May. Squally wind speed reaching 50-60 kmph gusting to 70 kmph is very likely from morning of 10th May till 11th May.
- ❖ **Andaman Sea:**
Squally wind speed reaching 45-55 kmph gusting to 65 kmph prevails on 9th May. Squally wind speed reaching 50-60 kmph gusting to 70 kmph is very likely from morning of 10th May till 11th May.
- ❖ **Southeast Bay of Bengal:**
Squally wind speed reaching 45-55 kmph gusting to 65 kmph prevails on 9th May. Squally wind speed reaching 50-60 kmph gusting to 70 kmph is very likely from morning of 10th May,
Gale wind speed reaching 80-90 kmph gusting to 100 kmph from 10th evening becoming 90-100 kmph gusting to 110 kmph from 11th May evening till 12th May morning and decrease thereafter.
Squally wind speed reaching 50-60 kmph gusting to 70 kmph is very 13th May.
- ❖ **Eastcentral Bay of Bengal:**
Squally weather with wind speed reaching 40-50 kmph gusting to 60 kmph is very likely on 9th May and 50-60 kmph gusting to 70 kmph on 10th May.
Gale wind speed reaching 60-70 kmph gusting to 80 kmph from evening of 10th May.
Gale wind speed reaching 80-100 kmph gusting to 120 kmph on 11th May becoming 130-140 kmph gusting to 150 kmph from 12th May evening till 13th May morning.
- ❖ **Westcentral Bay of Bengal:**
Squally weather with wind speed reaching 40-50 kmph gusting to 60 kmph is very likely on 9th May and 50-60 kmph gusting to 70 kmph on 10th May.

Gale wind speed reaching 60-70 kmph gusting to 80 kmph becoming 80-90 kmph gusting to 100 kmph on 11th May.

Gale wind speed reaching 100-110 kmph gusting to 120 kmph during 12th & 13th May.

❖ **Northeast Bay of Bengal:**

Squally wind speed reaching 45-55 kmph gusting to 65 kmph is likely on 12th May.

Gale wind speed reaching 65-75 gusting to 85 likely to commence from 13th noon and gradually increase becoming 110-120 kmph gusting 130 kmph 13th night to 14th forenoon.

(iii) Sea condition

❖ **Andaman Sea:**

Rough to very rough over south Andaman Sea prevails on 9th May

Very rough to high over Andaman Sea during 10th & 11th May.

Very rough to very rough over north Andaman Sea during 12th and 13th May.

❖ **Southeast Bay of Bengal:**

Rough to very rough prevails on 9th May.

Very rough to high during 10th and 11th May.

High to very high during on 12th May.

❖ **Eastcentral Bay of Bengal:**

Rough to very rough prevails on 9th May.

High to very high during 10th & 11th May.

Very High to phenomenal during 12th & 13th May.

❖ **Westcentral Bay of Bengal:**

Rough to very rough on 9th May.

High to very high during 10th & 11th May.

High to Very High during 12th & 13th May.

❖ **Northeast Bay of Bengal:**

Rough to very rough on 12th May.

High to very high during 13th & 14th May.

(iv) Fishermen Warning (warning graphics enclosed)

❖ Fishermen, small ships, boats and trawlers are advised not to venture into southeast and central Bay of Bengal and Andaman Sea from 9th May onwards.

❖ Fishermen, small ships, boats and trawlers are advised not to venture into northeast Bay of Bengal during 12th-14th May.

❖ Those over central Bay of Bengal and north Andaman Sea are advised to return by today, the 9th May.

(v) Advisory

❖ Regulation of tourism and offshore activities and shipping near Andaman and Nicobar Islands during 9th - 12th May and

❖ Regulation of shipping activity over the sea areas of southeast & central Bay of Bengal and Andaman Sea during 9th -13th May.

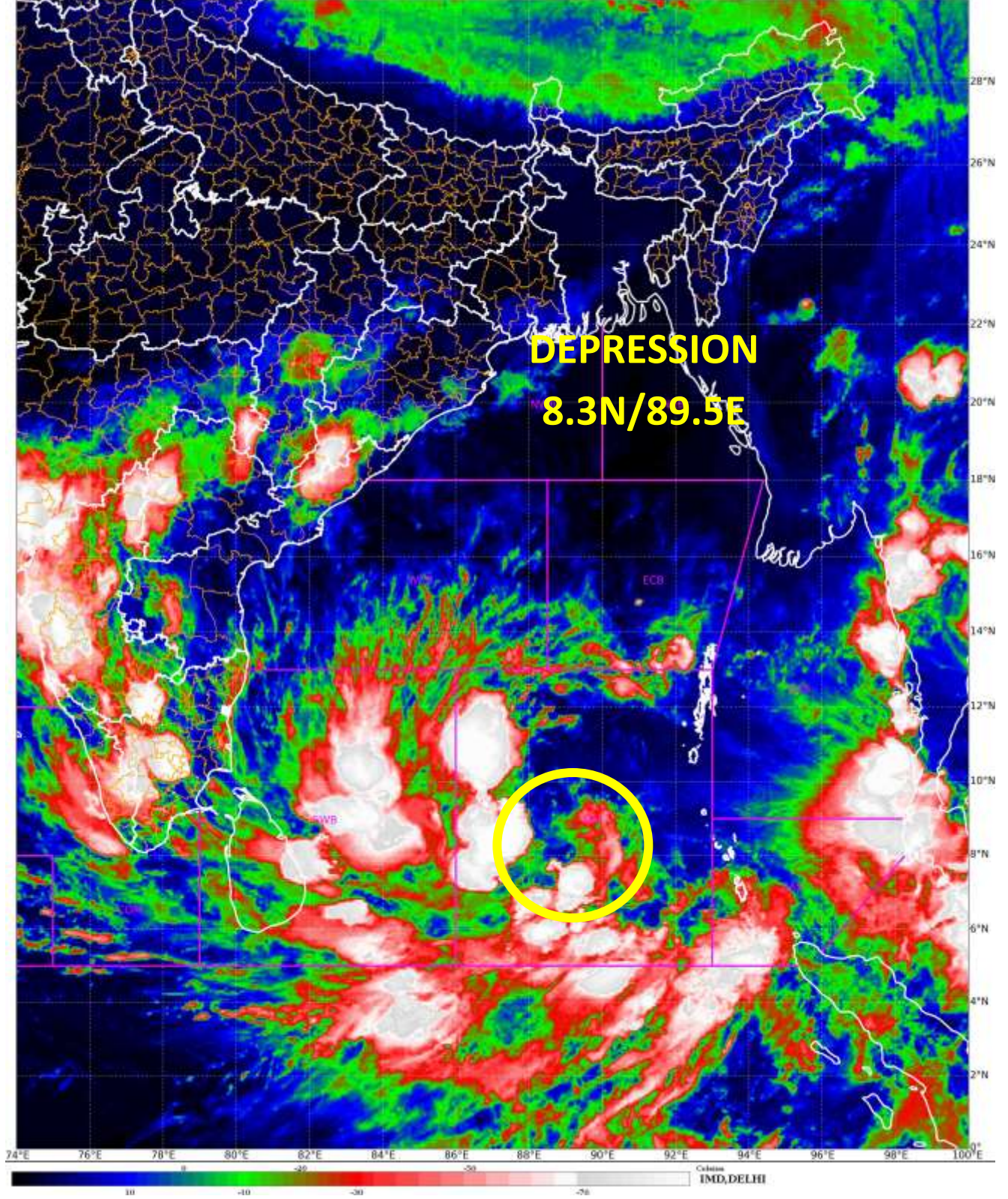
❖ Regulation of shipping activity over the sea areas of northeast Bay of Bengal during 12th-14th May.

The system is under continuous surveillance and the next message will be issued at 0230 hours IST of tomorrow, the 10th May 2023.

(Ananda Kumar Das)

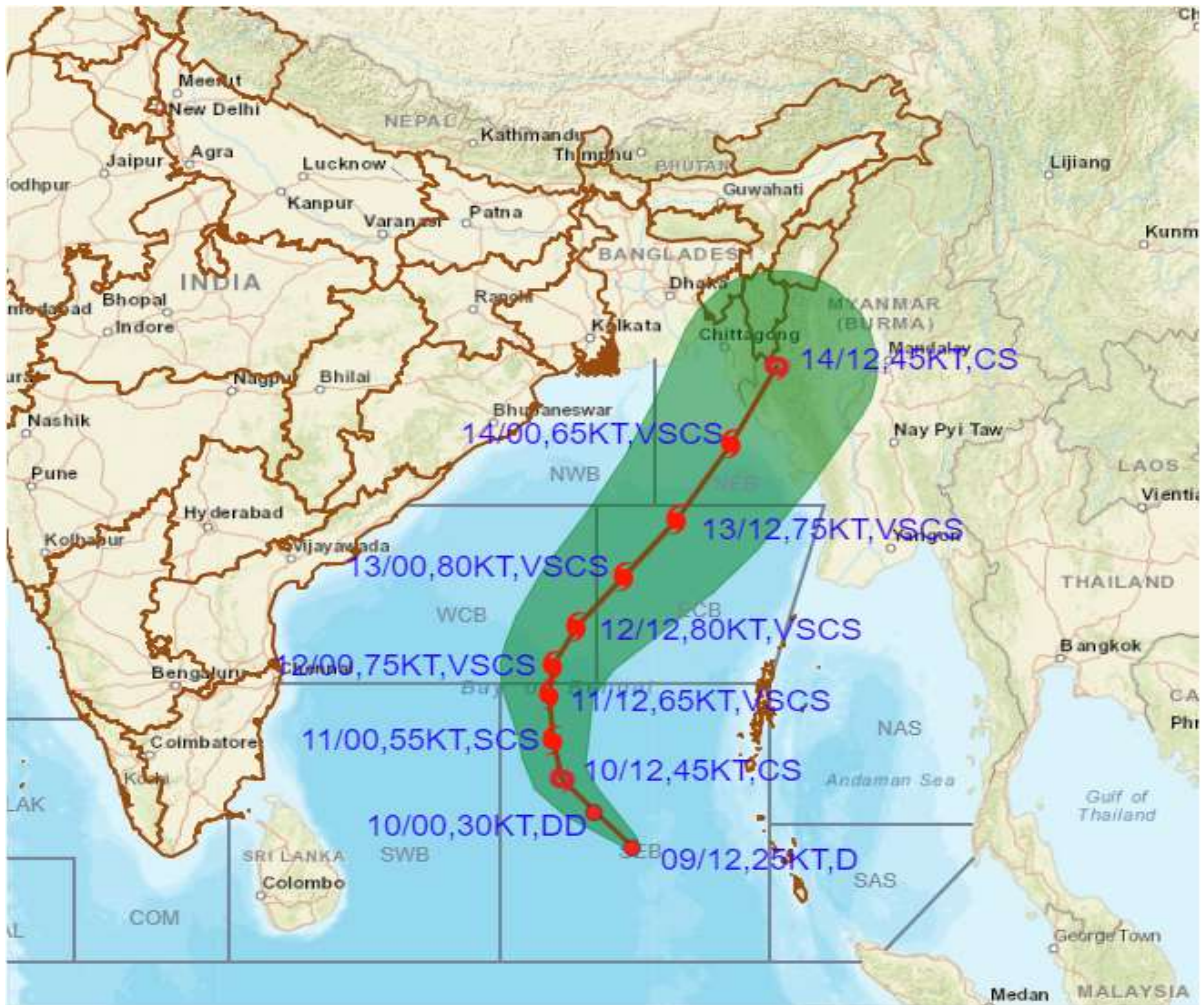
Scientist F, Cyclone Warning Division, New Delhi

Copy to: ACWC Kolkata/ ACWC Chennai/ CWC Bhubaneswar/CWCVisakhapatnam/MO Port Blair





OBSERVED AND FORECAST TRACK ALONGWITH CONE OF UNCERTAINTY OF DEPRESSION OVER SOUTHEAST BAY OF BENGAL BASED ON 1200 UTC (1730 IST) OF 09TH MAY 2023



DATE/TIME IN UTC

IST=UTC + 0530

L: LOW PRESSURE AREA

WML: WELL MARKED LOW PRESSURE AREA

D: DEPRESSION (17-27 KT)

DD: DEEP DEPRESSION (28-33 KT)

CS: CYCLONIC STORM (34-47 KT)

SCS: SEVERE CYCLONIC STORM (48-63KT)

VSCS: VERY SEVERE CYCLONIC STORM (64-89 KT)

ESCS: EXTREMELY SEVERE CYCLONIC STORM (90-119 KT)

SuCS: SUPER CYCLONIC STORM (≥ 120 KT)

● LESS THAN 34 KT

⊙ 34-47 KT

⊙ ≥ 48 KT

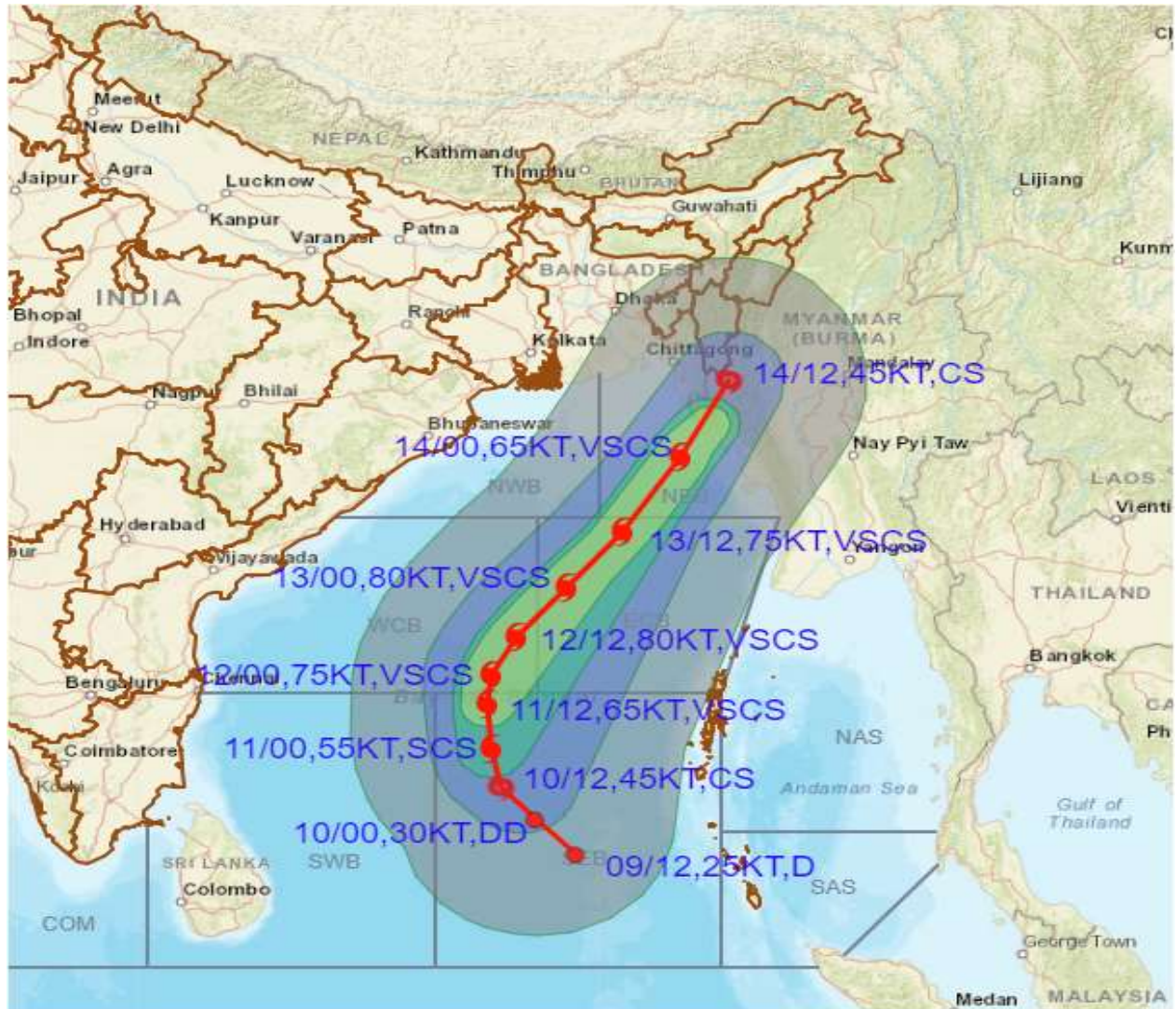
— OBSERVED TRACK

— FORECAST TRACK

▲ CONE OF UNCERTAINTY



OBSERVED AND FORECAST TRACK ALONGWITH QUADRANT WIND DISTRIBUTION OF DEPRESSION OVER SOUTHEAST BAY OF BENGAL BASED ON 1200 UTC (1730 IST) OF 09TH MAY 2023.



DATE/TIME IN UTC

IST=UTC + 0530

L: LOW PRESSURE AREA

WML: WELL MARKED LOW PRESSURE AREA

D: DEPRESSION (17-27 KT)

DD: DEEP DEPRESSION (28-33 KT)

CS: CYCLONIC STORM (34-47 KT)

SCS: SEVERE CYCLONIC STORM (48-63KT)

VSCS: VERY SEVERE CYCLONIC STORM (64-89 KT)

ESCS: EXTREMELY SEVERE CYCLONIC STORM (90-119 KT)

SuCS: SUPER CYCLONIC STORM (≥ 120 KT)

● LESS THAN 34 KT

○ 34-47 KT

● ≥ 48 KT

— OBSERVED TRACK

— FORECAST TRACK

▲ CONE OF UNCERTAINTY

AREA OF MAXIMUM SUSTAINED WIND SPEED:

■ 28-33 KT (52-61 KMPH)

■ 34-49 KT (62-91 KMPH)

■ 50-63 KT (92-117 KMPH)

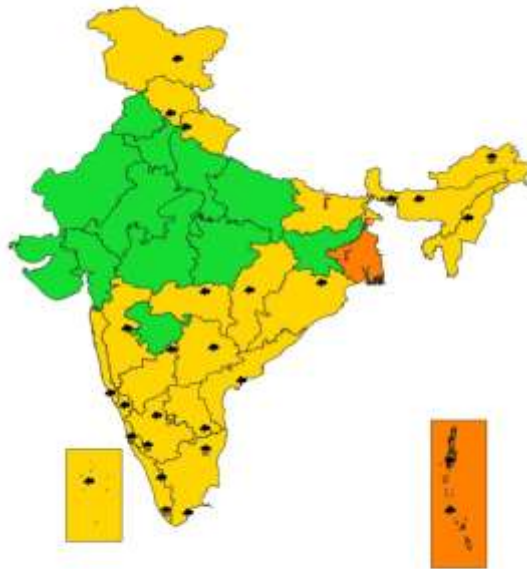
■ ≥ 64 KT (≥118 KMPH)

IMPACT OVER THE SEA

MSW (knot/kmph)	Impact	Action
28-33 (52-61)	Very rough seas	Total suspension of fishing operations
34-49 (62-91)	High to very high seas	Total suspension of fishing operations
50-63 (92-117)	Very high seas	Total suspension of fishing operations
≥ 64 (≥118)	Phenomenal	Total suspension of fishing operations



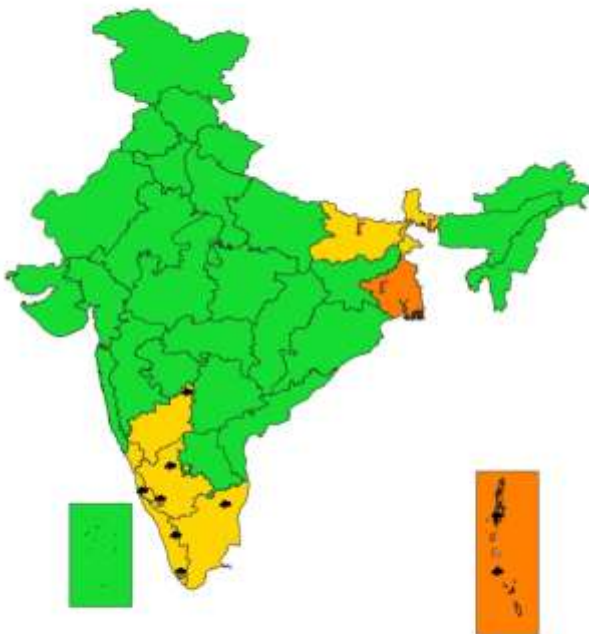
SUBDIVISIONWISE WEATHER WARNING FOR DAY 1
(9-5-2023)



- | | | |
|--|---|--|
| Subdivision Warning
● Heavy Rain
○ Heavy Snow
⚡ Thunderstorms & Lightning
⬛ Hailstorm | ☁ Dust Storm
N Strong Surface Winds
H Heat Wave
C Cold wave
☁ Fog | Subdivision color
■ NO WARNING
■ WATCH (BE UPDATED)
■ ALERT (BE PREPARED)
■ WARNING (TAKE ACTION) |
|--|---|--|



SUBDIVISIONWISE WEATHER WARNING FOR DAY 2
(10-5-2023)



- | | | |
|--|---|--|
| Subdivision Warning
● Heavy Rain
○ Heavy Snow
⚡ Thunderstorms & Lightning
⬛ Hailstorm | ☁ Dust Storm
N Strong Surface Winds
H Heat Wave
C Cold wave
☁ Fog | Subdivision color
■ NO WARNING
■ WATCH (BE UPDATED)
■ ALERT (BE PREPARED)
■ WARNING (TAKE ACTION) |
|--|---|--|



SUBDIVISIONWISE WEATHER WARNING FOR DAY 3
(11-5-2023)



- | | | |
|--|---|--|
| Subdivision Warning
● Heavy Rain
○ Heavy Snow
⚡ Thunderstorms & Lightning
⬛ Hailstorm | ☁ Dust Storm
N Strong Surface Winds
H Heat Wave
C Cold wave
☁ Fog | Subdivision color
■ NO WARNING
■ WATCH (BE UPDATED)
■ ALERT (BE PREPARED)
■ WARNING (TAKE ACTION) |
|--|---|--|



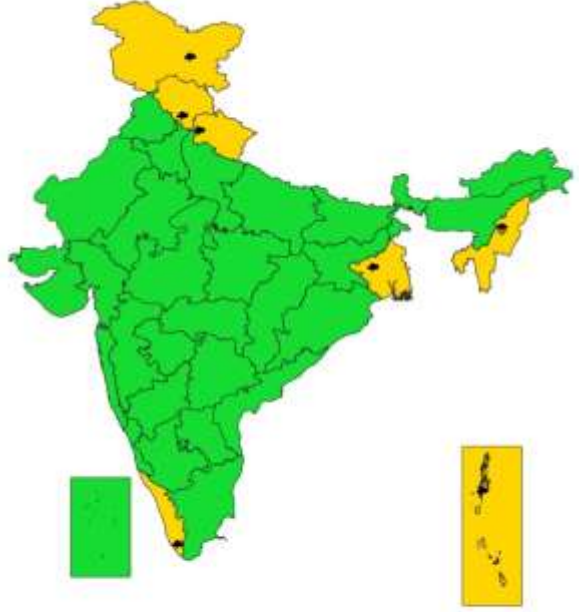
**SUBDIVISIONWISE WEATHER WARNING FOR DAY 4
(12-5-2023)**



- | | | |
|-----------------------------|------------------------|--------------------------|
| Subdivision Warning | Dust Storm | Subdivision color |
| ● Heavy Rain | ⚡ Strong Surface Winds | 🟢 NO WARNING |
| ❄️ Heavy Snow | 🔥 Heat Wave | 🟡 WATCH (BE UPDATED) |
| ⚡ Thunderstorms & Lightning | ❄️ Cold wave | 🟠 ALERT (BE PREPARED) |
| ⚡ Hailstorm | 🌫️ Fog | 🔴 WARNING (TAKE ACTION) |

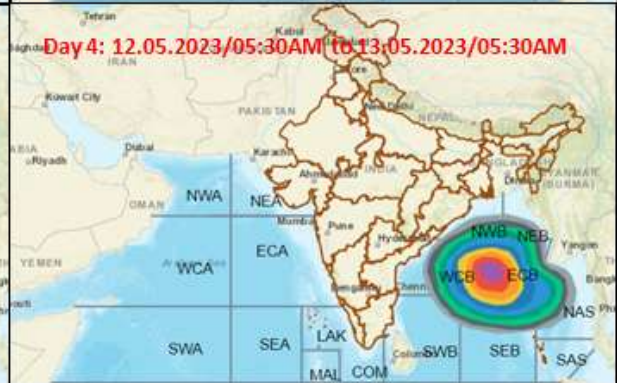
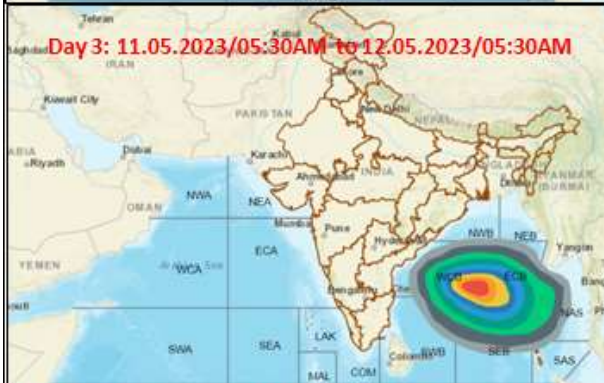


**SUBDIVISIONWISE WEATHER WARNING FOR DAY 5
(13-5-2023)**



- | | | |
|-----------------------------|------------------------|--------------------------|
| Subdivision Warning | Dust Storm | Subdivision color |
| ● Heavy Rain | ⚡ Strong Surface Winds | 🟢 NO WARNING |
| ❄️ Heavy Snow | 🔥 Heat Wave | 🟡 WATCH (BE UPDATED) |
| ⚡ Thunderstorms & Lightning | ❄️ Cold wave | 🟠 ALERT (BE PREPARED) |
| ⚡ Hailstorm | 🌫️ Fog | 🔴 WARNING (TAKE ACTION) |

Fishermen warning graphics



	Squally WX with wind speed 40-50 kmph gusting to 60 kmph
	Squally WX with wind speed 50-60 kmph gusting to 70 kmph
	Gale wind speed 60-70 kmph gusting to 80 kmph
	Gale wind with wind speed 70-80 kmph gusting to 90 kmph
	Gale wind with wind speed 80-90 kmph gusting to 100 kmph
	Gale wind with wind speed 90-100 kmph gusting to 110 kmph
	Gale wind with wind speed 100-110 kmph gusting to 120 kmph
	Gale wind with wind speed 110-120 kmph gusting to 140 kmph
	Gale wind with wind speed 130-140 kmph gusting to 150 kmph
	Gale wind with wind speed 140-150 kmph gusting to 160 kmph

FISHERMEN ARE ADVISED NOT TO VENTURE INTO THE MARKED AREAS